



## PROJECT SUMMARY:

# ProCure Chicago Proton Therapy Center

**MECHANICAL, INC.**  
www.mechinc.com

Toll Free: (800)747-1955  
Phone: (815) 235-1955  
Fax: (815) 235-1940

### CAPABILITIES:

HVAC PIPING

PLUMBING

SHEET METAL

SERVICE

INDUSTRIAL PROCESS  
PIPING

WATER AND WASTE  
WATER TREATMENT  
PLANTS

PIPE FABRICATION

COMMISSIONING

AQUATIC CENTERS

RENEWABLE FUELS

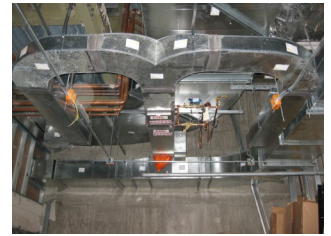
CAD/BIM

MEDICAL GAS

RETRO-COMMISSIONING

INDUSTRIAL TRADES

**Customer:** Gilbane  
**Contract Amount:** \$6,008,772  
**Location:** Warrenville, IL



The new proton therapy center is a two story structure dedicated to providing proton treatment mainly to cancer patients. The first floor houses the exam and treatment rooms and the second floor houses the staff offices. This center is one of the first proton treatment centers in the Midwest. The project was a partnership between ProCure and CDH (Central Dupage Hospital).

Mechanical was responsible for the plumbing, HVAC, process chilled water, and medical gas project scopes for the new proton therapy center.

The plumbing scope included the installation of the plumbing piping, equipment, and fixtures. The equipment installed included a city water meter, RPZ's, two water heaters and a storage tank, a water softener, sump pumps, circulating pumps, expansion tanks, and safety shower .

The HVAC scope included the installation of the piping and duct, two new indoor AHU's and external humidifiers, two new chillers, two new cooling towers, pumps, boilers, fan coils, unit heaters, finned tube radiation, radiant ceiling panels, computer room air conditioners, fuel oil tank and system, exhaust fans, and VAV's.

The process chilled water scope included the installation of piping and pumps to provide chilled water for the proton therapy equipment.

The medical gas scope included the certified installation of the piping, air compressor, medical vacuum system, oxygen and nitrous oxide manifolds, master alarms, area alarms, zone valve boxes, and wall outlets.

The treatment rooms are surrounded by 10' thick concrete walls, floors, and ceilings. Since proton therapy treatment is still a form of radiation therapy, the concrete surround is to prevent radiation from leaving the treatment rooms. The challenge with the thick concrete was the number of pours for each slab or wall and the amount of piping that ran through them. Mechanical had to closely coordinate with the concrete contractor in order to ensure the piping was properly installed and in the correct location. In order to meet that challenge Mechanical's CAD operator and foremen worked closely to ensure that the coordination of the area was correct and the installation would be right the first time.

The project schedule was very fast paced and demanding. Mechanical, Inc met the schedule challenges head on and completed the project on time.

